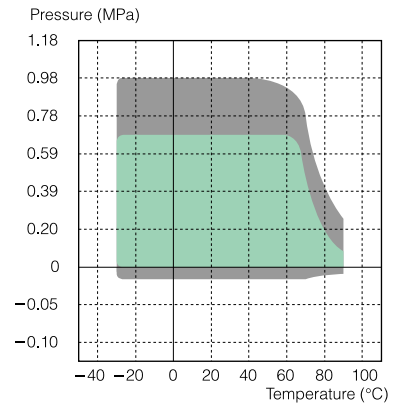
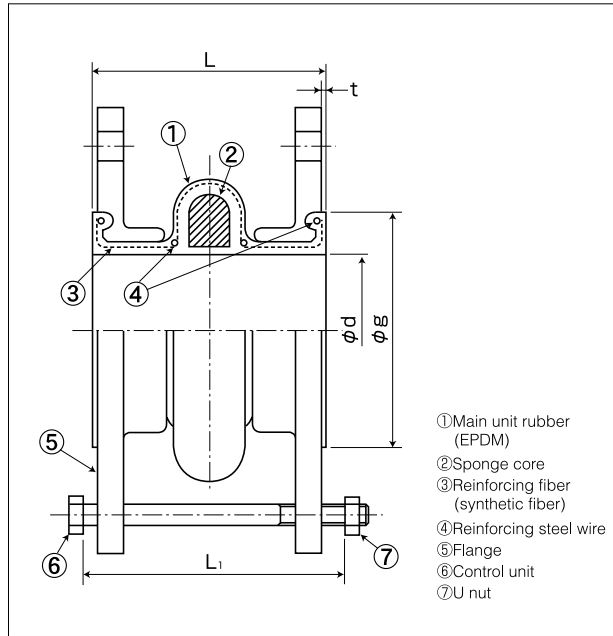


Pressure PB Type



Working range applicable when combined displacement is 50% or lower.
 Working range applicable when combined displacement exceeds 50%.
 Operating pressure: 0.98MPa (10kgf/cm²) or lower
 Negative pressure: -0.01MPa (-0.1kgf/cm²) or higher
 Operating temperature: -30°C~+90°C (Cooling and heating water)
 ● Before use, check that maximum working pressure and maximum working temperature are within operational ranges.

Standard dimensions and allowable displacements

Nominal diameter	Unit dimensions				Allowable displacement				Allowable displacement upon installation				Weight (kg)	Dimensions of control unit set			
	φd (mm)	φg (mm)	L (mm)	t (mm)	Expansion (mm)	Contraction (mm)	Eccentricity (mm)	Declination (°)	Expansion (mm)	Contraction (mm)	Eccentricity (mm)	Declination (°)		Reference	Bolt used	L ₁ (mm)	L ₂ (mm)
40	37	83	140	3.0	5	5	5	10	2	2	2	3	2.1	M-12	139	-	2
50	49	98	145	3.0	5	5	7	10	2	2	3	3	2.5	M-12	144	-	2
65	62	118	150	3.0	8	8	8	10	3	3	3	3	3.4	M-12	152	-	2
80	73	127	155	6.0	8	8	8	10	3	3	3	3	3.8	M-12	151	-	2
100	98	153	175	6.0	8	8	10	8	3	3	4	2	4.6	M-14	171	-	2
125	125	183	190	6.0	10	10	12	8	4	4	4	2	6.7	M-14	188	-	2
150	150	215	200	6.0	10	10	13	5	4	4	4	2	8.7	M-16	198	-	2
200	200	265	205	6.0	10	10	13	5	4	4	4	2	11.1	M-16	203	-	2
250	250	324	215	6.0	10	10	13	3	4	4	4	1	17.2	M-20	213	-	2
300	300	370	215	6.0	10	10	13	3	4	4	4	1	19.2	M-20	213	-	2
350	350	415	310	6.0	10	10	13	3	4	4	4	1	31.3	M-20	308	-	3

- Weights with AC7A or JIS10K flanges mounted are indicated.
- Dimension allowances on installation are included in allowable displacements.
(Allowable displacement = Dimension allowances on installation + Displacement under operation)



PB 350



Product features

- ① A sponge core is embedded in the inner arch surface of the P type product to make the internal surface straight and prevent liquid residue.
- ② Excellent installation workability with loose flange.

Product applications

- ① Isolation of vibration on low-pressure pumps and blowers, and absorption of expansion and contraction of heat-resistant resin piping.

Considerations for handling

- This product may not be used with oils and solvents.
- This product may not be used with piping for hot water and swimming pool water circulatory systems. We recommend PF type products with PTFE internal material for these applications.

※ Specifications and structures are subject to change without notice for purposes of improvement.